



## Special Features & Upgrades

- Upgraded Kitchen Cabinets w/rollout shelves
- Upgraded Engineered Wood Floors
- Upgraded Shower Bath Tiles
- Upgraded Quartz Countertops
- Upgraded Gas Range & Dishwasher
- Upgraded to Front Load Washer & Dryer
- Upgraded Lighting
- Additional Outlets and Dimmers



**Total Share Payment \$171,576.00**

Share Transfer : \$142,907.00

Upgrades: \$28,669.00

**Monthly Member Fee: \$2486.66**

Garage #41 | Storage #G-40

Monthly Member Fee Includes: 1 Underground Heated Parking Stall, Internet, Cable TV, Trash Removal, Water/Sewer, Mortgage, Property Taxes, Master Insurance policy on common elements, Property Maintenance and professional management and a Separate Locked Storage Area in the Garage.

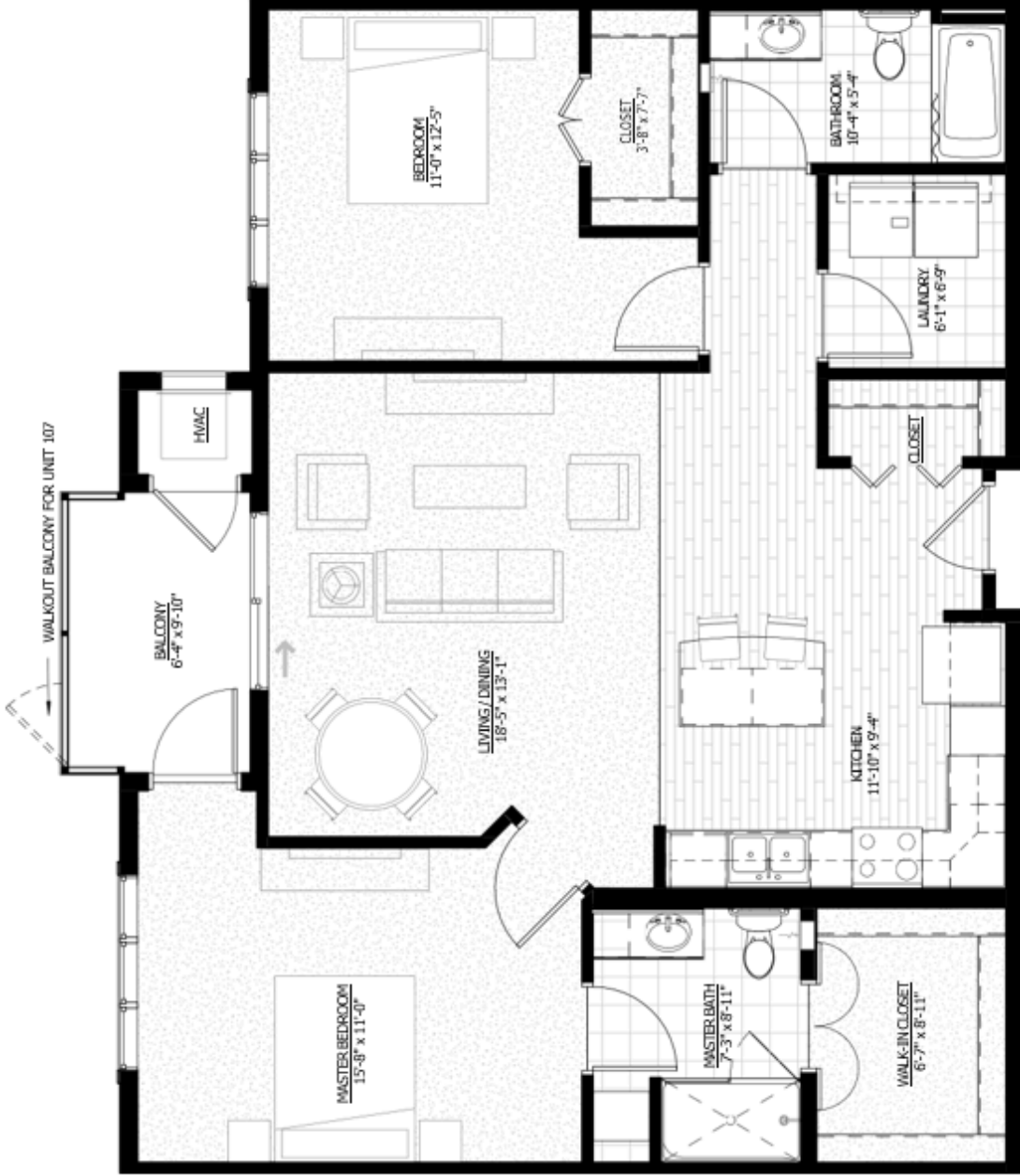
Members pay for their own household's electricity and gas usage, and HO6 Insurance Policy.

## Community Amenities:

- The Fireside - Grand 2-Story Lobby
- The Croix - Main gathering area with a full kitchen
- The Social - TV with Couch, Chairs, Library
- The Guild - Craft & Hobby Room
- Wellness Center - Fitness Machines
- Makerspace - DIY Project Workspace

Scan for more information on website





LEVEL 2 & 3



LEVEL 1



Actual dimensions will vary due to construction. Plans are subject to change

