



## *Welcome to Wexford!*

We are happy you have joined the neighborhood! We hope you enjoy your new home, neighbors, green space and community events. This welcome packet provides some useful information about the neighborhood, and surrounding area. If you have questions please reach out to your welcoming committee and we will try to connect you to the answer.

*Your neighborhood welcome committee*

Monica Bear  
bear.monica7109@gmail.com

Jane Wery  
janewery207@gmail.com

Regina Belotti  
reginabelotti2022@gmail.com



**Use this QR code anytime to  
visit our website and learn more!**

# A BIT ABOUT WEXFORD VILLAGE

---

**W**exford Village is a

large west-side Madison neighborhood covering 407.5 acres. It includes the condominium communities of the Saukdale, Quail Ridge and High Point Gardens as well as single family homes and duplexes. It is bounded by the Madison/Middleton city limit on the north, N. Gammon Road on the east, Old Sauk Road on the south and High Point Road on the west. It consists of 650 single-family homes, 114 condominiums, and 28 duplexes with a population of more than 3500. Approximately 95% of the neighborhood's housing is owner occupied.



## **WEXFORD VILLAGE IS HOME TO A MIARAD OF GREEN SPACES**

Wexford Park at the intersection of Sawmill Road and N. Westfield Rd. This 20.6-acre City of Madison Park includes a playground, park shelter, tennis and pickleball courts, a volleyball court, two ice skating rinks, baseball and soccer fields, a "Frisbee golf" area and adjacent woods with walking paths.

Strickers Pond, between Longmeadow Rd. and Middleton Streets is a 13.49-acre, city of Madison conservation park. It includes a glacial kettle pond and woodland area, circled by a walking path. Birds, frogs, toads, turtles, muskrats and more abound, especially during spring and fall migration.

Wexford Pond located near the intersection of Old Sauk and Westfield Rd behind High Point Church, and High Point Pool is a retention basin created by the City of Madison for stormwater management for the Pheasant Branch watershed. Neighborhood paths and greenways surround the pond.

Wexford Prairie lies between Longmeadow Road and Middleton Street about one block west of N. Gammon Road. It has a restored prairie, shaded brick patio with benches and tables, walking paths and large fields for kite flying, Frisbee, football throwing or daydreaming.

The neighborhood has 3.7 miles of lighted walking/biking paths and greenways, accessible from Wexford Park, most cul-de-sacs and many residents' backyards.

***It takes a village! Wexford Village and its residents maintain the prairies area, the walking/biking paths and greenways, the flowerbeds at Wexford Park and the neighborhood entrance on Sawmill, winter ice skating rinks and the trail network through Wexford Park and more.***

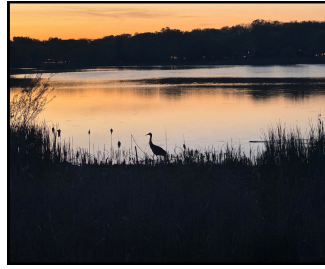
# GREEN SPACES AND GATHERING SPACES

---



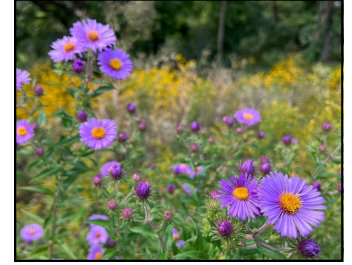
WEXFORD  
PARK

Neighborhood park that serves as a hub for youth sports and neighborhood activities



STRICKER  
POND

Conservation park with walking path. Great for birding, seasonal migrations and turtle watching



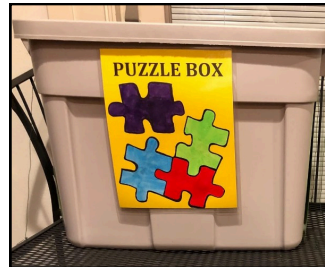
WEXFORD  
PRAIRIE

Neighborhood green space connecting Longmeadow Rd and Middleton St.



LITTLE  
LIBRARIES

7009 Harvest Hill  
bike path by Wexford Pond,  
1118 Middleton St.



PUZZLE  
EXCHANGE

Free jigsaw puzzle exchange  
1010 Westfield Rd



COMMUNITY  
GARDENS

Community and food pantry gardens;  
food composting drop off.  
<https://oldsaukcommunitygardens.com>



WEXFORD  
POND

Stormwater retention basin  
behind High Point Church  
and High Point Swim Club.



HIGH POINT  
SWIM CLUB

Private swim club open  
Memorial Day to Labor Day,  
located in the neighborhood



ALISHA ASHMAN  
LIBRARY

Children and adult programs;  
neighborhood polling place

# Annual Wexford Social Events

## **Easter Egg Hunt**

4/11/2026 9:30 am

## **Earth Day Clean Up**

4/25/2026 9:00 am

## **Neighborhood Garage Sales**

5/15 and 5/16/2026 8:00 am to 5:00 pm



## **4<sup>th</sup> of July Parade and Picnic**

7/4/2026 11:00 am

## **End of Summer Potluck and Picnic**

9/5/2026 5:00pm-9:30 pm

## **3-5 Year Old Neighborhood Soccer**

For more info contact:  
wexfordkidsoccer@gmail.com

## **Wexford Youth Baseball**

For more info contact:  
wexfordbaseball@gmail.com



# NEIGHBORS' FAVORITES



## Community and Walkability

What I love most about Wexford is the sense of community and its walkability. The Alicia Ashman Library, High Point Pool, downtown Middleton, and Stricker and Tiedeman Ponds are all within walking distance. While out walking, I often see friends, meet new people and their dogs, and enjoy a friendly chat.

1

## DIY Family Fun

Stricker Pond provided a perfect locale for our kids summer birthday fun. We'd make "Pond Walk" bingo cards with items such as turtles, herons, toads, etc. A small pack of grade schoolers would run around the pond path tallying their nature sitings, trading full cards for party favors. Everyone went home a little more tired than when they arrived.

2

## Friendly and Convenient

3 My husband and I moved here in 2023, and just love this area. The walking trails, friendly neighbors and close proximity to shopping. Our grandkids LOVE the 4<sup>th</sup> of July parade.

3

## Ponds and Paths

4 One of the many things that make Wexford a great neighborhood are the walking paths that connect various cultures-de-sacs, the park, Stricker's Pond, the library and more! Strickers is wonderful in all seasons as it is filled with interesting wildlife, wildflowers and it serves as a great place to ice skate in winter. You may also venture a bit further to Tiedeman's Pond for more adventure

4

5

## Location, Location

We have lived in Wexford neighborhood since our kids were small; now they are long gone. What drew us to the neighborhood keeps us here--the 3.7 miles of walking paths, the large green spaces (Wexford Park, Stricker's Pond, and the sweet, quiet Wexford Prairie) plus the wonderful people we call neighbors. The location can't be beat with the close proximity to downtown Madison and charming Middleton just a bike ride away. How lucky we are to be here!

# NEIGHBORS' FAVORITES



## Multi-Generational Neighbors

I have appreciated the multigenerational ownership in Wexford. Halloween is very fun as a large number of households welcome participation, regardless of family structure. Sidewalks and cul-de-sacs allow for easy safe tick or treating. Children are creative, polite and in high spirits. I look forward to it every year.

6

7

## Winter on Stricker Pond

Stricker Pond provides wonderful exposure to evolving nature. In winter it was a delightful surprise to find ice skaters enjoying the pond. The cleared snow paths provide opportunities for hockey games and figure skating. It is a cooperative effort for neighborhood engagement and heartwarming to see on a cold day.

## SO MANY BIRDS!

8



## LEARNING TO BIKE IN WEXFORD PRAIRIE

Our home's previous owners shared that the narrow circular path in Wexford Prairie was ideal for teaching their kids to ride bikes. No traffic, and a wide grass berm on each side of the path helped avoid mishaps even if they tipped on their training wheels. At the time our children were ages one and two; bike riding seemed an eternity away. In the blink of an eye we were lapping the circle, as the next generation of kids peddled their way to cycling independence.

10

9

## SHARING AND RECYCLING

We love how people use the neighborhood Facebook page to pass on items they no longer need or items they want to share. Outgrown baby items and toys, well loved furniture and yard gadgets all find continued life with others who can use them. People generously share perennials, garden bounty and more.

# NEIGHBORS' FAVORITES



## ANNUAL SOCIAL EVENTS

The neighborhood sponsors annual social events that appeal to multiple ages from little kids hunting for Easter eggs or waving at fire trucks at the 4<sup>th</sup> of July parade, families and retired folk cleaning the park for Earth Day, and all ages gathered for the end of summer picnic. Neighbors show up to both volunteer and have fun.

11

12

## UNEXPECTED DELIGHTS

Walking through the neighborhood can be full of unexpected delights and hidden treasures. Painted rocks periodically appear on the Sticker Pond path, books abound in the many little libraries, surplus perennials get split and placed near driveway curbs for sharing, veggie starts are for sale in spring and lemonade stands pop up on hot summer days.

## SEASONAL SOUNDS

13

The calls of migrating cranes and geese mark the arrival of spring and fall. Owls hoot in the winter while children's voices waft across Wexford Park and beyond during baseball and soccer seasons.

## COMMUNITY GARDENING

15

14

I love how the Old Sauk Community Gardens beautify the neighborhood, provide opportunities for people to grow their own food as well as supply fresh veggies to local food pantries. They also have a food compost drop-off site.

## PATHS TO INDEPENDENCE

The paths make it safe and easy for young kids to gain independence as they can walk or bike to the parks and their friends, the pool and library without the need to cross busy streets. As they get older, middle and high school are within walking and biking distance as are many places that they can meet up with friends.

# NEIGHBORS' FAVORITES



## HIGH POINT POOL

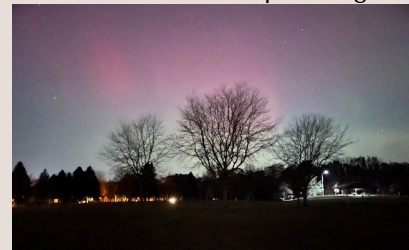
16

While the pool requires a membership that can feel like a financial stretch, it is a great summertime hub for kids and families. Swim lessons are included in the membership, there are dive in movie nights, margaritas for the parents, pickle ball and more. On busy nights, when you need some low key family time, you can order pizza delivery and eat it in the picnic area.

17

## NORTHERN LIGHTS

While not the darkest of skies, Wexford Park provides a neighborhood viewing spot for northern lights, lunar eclipses and satellite spotting.



Designed as a planned community that aimed to encourage neighborly interactions, and green space usage, homes were built without fenced yards. Covenants discourage fences and limit their height to three feet, preserving the open feel that our family loves.

## OPEN SPACES

18

## PEOPLE SHOW UP FOR EACH OTHER

20 19

When we moved in, neighbors showed up with warm welcomes and plates of cookies. People with snowblowers often clear our sidewalk before we get the shovels out. In hard times we have received hot meals, dinner invitation and other acts of kindness.

## PARENT AND NEIGHBOR LED ACTIVITIES

While our kids have outgrown the 4-5 year old soccer and Wexford youth baseball organized by neighborhood parents, we love walking through the park and seeing the activities carry on season after season. We appreciate the many large and small opportunities people have to contribute to the neighborhood, from pulling garlic mustard in the spring to personalizing the plantings in neighborhood circles or just saying hi to each other when walking the paths.